



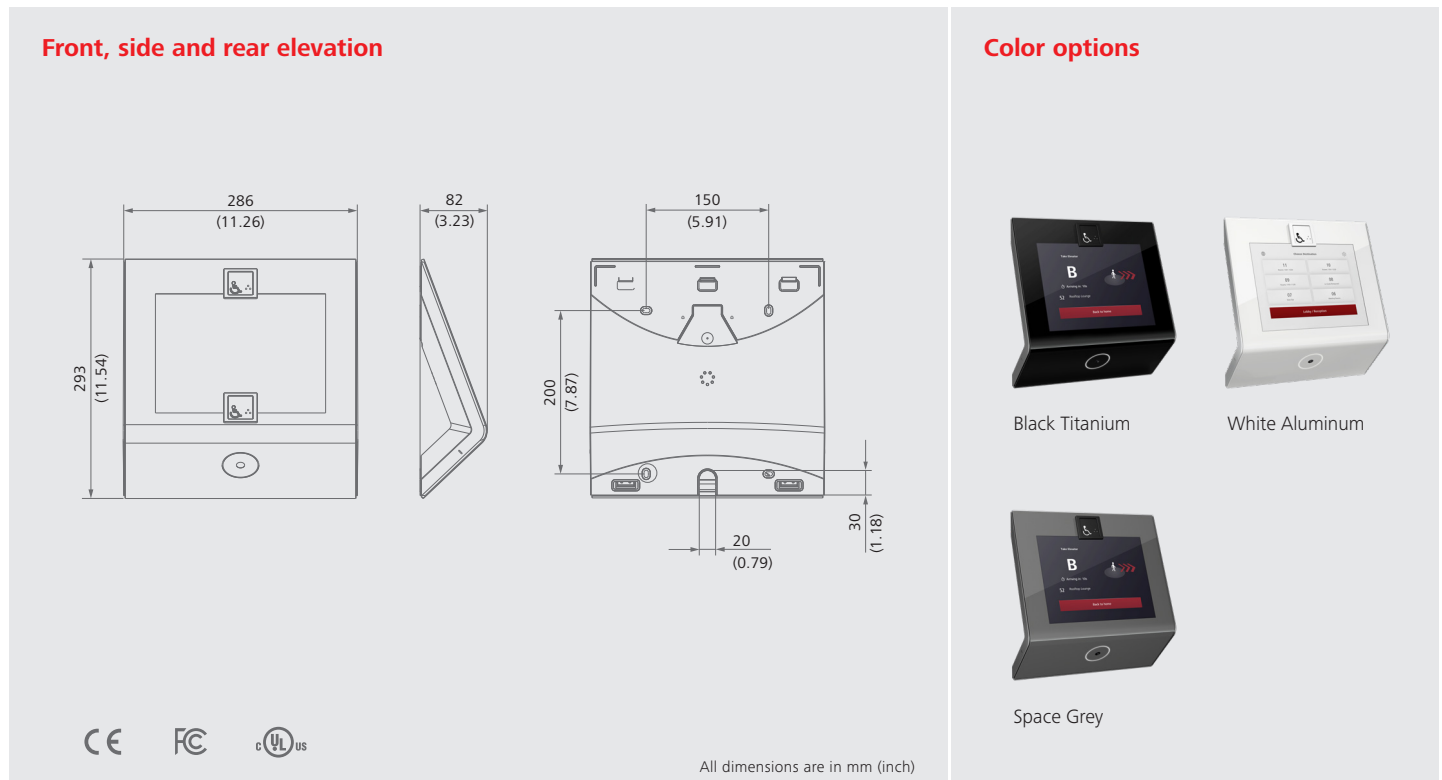
Schindler PORT 1 Wide

The stylish PORT terminal with
an immersive screen



Schindler PORT 1 Wide Specifications

Schindler PORT 1 Wide offers an immersive 10.4" HD touch screen suitable for extensive floor plans and dynamic interior spaces. The landscape-oriented screen, iconic bent-glass design, and comprehensive user interface make building transit intuitive for passengers in large offices, hotels, or multi-purpose buildings. Enabled for touchless operation.



Properties and dimensions

Physical Dimensions (W×H×D)	286×293×82 mm (11.26×11.54×3.23 inch)	Mounting Height	The centerline of the Accessibility button is 1100 mm (43.3 inch) above the finished floor level (FFL) – button at top configuration
Power Supply	24–48 VDC	Screen	10.4" HD display, 1024×768 pixel, touch panel
Power Consumption	max. 13 W per unit	Touchless Operation	myPORT, myPORT QR
Standby Mode	Yes, triggered by proximity sensor	QR Code Camera	Standard
Range of Application	Temperature: 0 to 45 °C (14 to 113 °F) Humidity: 0 to 90% non-condensing Indoor use only	Card Reader	Supports all common RFID tags (all tags must be prequalified by our test service center prior to installation)
		Accessibility Button	Optional, top or bottom

Schindler Management Ltd.
Zugerstrasse 13
6030 Ebikon
Switzerland
+41 41 445 30 60

www.schindler.com

We Elevate

This publication is for general informational purposes only and we reserve the right at any time to alter the product design and specifications. No statement contained in this publication shall be construed as a warranty or condition, expressed or implied, as to any product, its fitness for any particular purpose, merchantability, quality or shall be interpreted as a term or condition of any agreement regarding the products or services contained in this publication. Minor differences between printed and actual colors may exist.

Copyright © 2022 Schindler Aufzüge AG